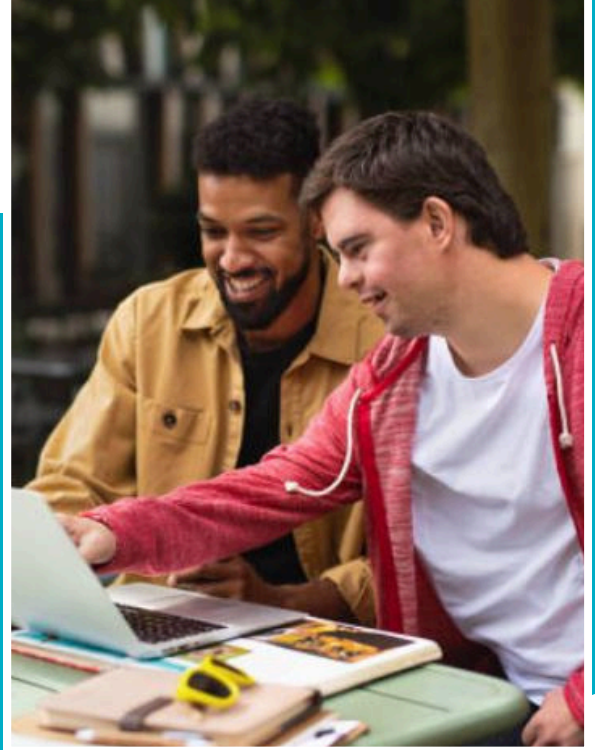


## Intellectual and Developmental Disability (IDD) Services

*Person-centered approaches  
for all ages*



TalkPath Live (TPL) offers comprehensive support for individuals of all ages seeking to live independently and be active members of their communities. TPL is a premier provider of therapeutic services nationwide for people facing an expansive array of challenges that can be effectively, affordably, and conveniently addressed via the vehicle of teletherapy. TPL employs a two-way, secure video platform that is HIPAA/FERPA compliant and fulfills all IDD service requirements.

Our mission is to provide online individualized services that will enhance, elevate, and expedite the skills acquisition and goals of our clients and their families. Scaling independence has always been TPL's vision for a person-centered, community-based future for all our clients, filled with a sense of purpose, achievement, and belonging.

### **TalkPath Live's menu of IDD services includes:**

- Dysphagia/Swallowing Evaluations & Therapy
- Speech & Voice Assessments & Treatment
- Physical & Occupational Therapies
- Mental Health Interventions
- Assistive Technology Evaluations
- Family Education & Training Workshops
- Case Management

---

### **FOR MORE INFORMATION:**

Denise Russo, MA-SLP, MSIS • [drusso@talkpathlive.com](mailto:drusso@talkpathlive.com)

TalkPath™ Live • 700 Alexander Park Drive, Suite 101 • Princeton, NJ 08540 • 855-274-9582

[www.talkpathlive.com](http://www.talkpathlive.com)